



Pierce County

# HOMELESSNESS 2019

## 2019 Point-In-Time Count Results

Each January, Pierce County surveys people experiencing homelessness. This "point-in-time count" is a one-day snapshot that captures the characteristics and situations of people living here without a home.

**1,486**

Homeless persons counted



**24%**

Chronically homeless



**25%**

Members of families with children



**38%**

Female



**7%**

Adult survivors of domestic violence



**10%**

Unaccompanied youth & young adults



**9%**

Veterans



**46%**

People of color\*

\*However, people of color make up only 26% of the Pierce County population. (ACS estimate 2017)

## Not all people experiencing homelessness sleep outside



**47%**

Emergency shelter



**28%**

Out of doors (street, tent, etc.)



**11%**

Transitional housing



**14%**

Vehicle, abandoned building, other

## Most told us they lived in Pierce County before they became homeless

72% Pierce County

6%

8%

14%

Other WA counties

King County

Outside WA

## The main causes of homelessness are economic and housing-related

Survey respondents shared many causes for becoming homeless. These are the top three:

1. Lack of affordable housing
2. Inadequate income or employment
3. Eviction

## Many people experiencing homelessness have an income



44% of people who are homeless in Pierce County report at least one source of income.

## Mental illness is the most commonly reported disability

Here is the breakdown of the most commonly reported disabilities. Some people reported having multiple disabilities.

### Mental illness

**36%**

### Physical disability

**30%**

### Chronic health condition

**30%**

### Substance use

**23%**

### Developmental disability

**10%**

## For the full data set:

Visit [www.piercecountywa.gov/pointintime/2019data](http://www.piercecountywa.gov/pointintime/2019data)

# DIALOGUES on RACE

Many of you are in small groups and have been reading the book *Rising Out of Hatred* together.

When the Church Council picked this book for the “Friends in Faith” Small Groups, it was—I believe—with the acknowledgement that it would make for challenging conversations, and also conversations of depth and value. The small groups have always been intended to foster fellowship among God’s people at MVLC. And at the same time, they are intended to create space for meaningful and faithful conversations that would push us all to wrestle with our faith as it meets the realities of the world.

I have heard that some have struggled with this book—for a variety of reasons. I would nonetheless encourage you to keep reading, and most of all, keep talking about it.

If we cannot gracefully and with integrity talk about such things as a church—what hope is there for the world to have these conversations with any sort of compassion? Especially as we head into another year of presidential elections, knowing that racial rhetoric was at the forefront of the 2016 election, it will help each of us to have language and theology that comes from dialogue in our faith communities regarding conflicting ideology in our nation on race.

In the same spirit, the high school youth will be starting a unit in January: *Dialogues on Race*. The goal is the same for them, that no matter where we sit on a given topic, we can all benefit from

getting more information and hearing others’ perspectives to add nuance and recognize complexities. And we can always grow by having such conversations within our faith community. The curriculum the youth will be using is intentionally designed by Augsburg Fortress (the ELCA’s printing house) to practice good communication skills on tough topics, so that we equip our youngest generations with the ability to have challenging conversations and remain in caring, faithful relationship.

The church of Christ is uniquely equipped to manifest healing, hope and wholeness in the midst of a divided and hurting world. May we realize our power to do so through the type of conversations we have and the way we approach them.

May Christ be made known in and through you this Epiphany,

*Pastor Bri*

# SUNDAY ADULT EDUCATION

## The Body of Christ in the Age of Loneliness

In 2017, Billy Baker was asked to write an article for the Boston Globe on loneliness among American men. At first, he balked that he was the one asked to write this article. He didn't identify as lonely. And then he started thinking... as a father and spouse, he loved his family very much and had made some sacrifices in trying to be a working parent, with a working spouse. One of those sacrifices was his friendships. He was, like many middle-aged American men (and many women)...lonely.

We live in what has been dubbed the “age of loneliness” in America. In some ways, we are more socially connected to networks of people than ever before. And yet at the same time, half of Americans—of all ages—report feeling lonely.

Over the four weeks of January, Sunday morning adult education will explore some of the causes and impacts of loneliness in our society: from the human need for intimacy, to the rising value of busyness in American culture, and the acute effect of loneliness on American men. Alongside these cultural observations, we will wrestle with covenantal commitments and the theology of being one Body in Christ, to see how our faith inherently recognizes and embodies the human need for intentional and intimate social connections.

This class is designed to offer time for personal reflection, small group sharing, and thinking about how our theology and faith community inform the struggles we face on the day-to-day. How might this fellowship we belong to speak into some of the most pressing struggles of our time?

Week 1 • January 5 • “The Need for Intimacy”

Week 2 • January 12 • “The Virtue of Busyness”

Week 3 • January 19 • “The Lonely American Man”

Week 4 • January 26 • “Loneliness among Seniors and Health Impacts”

Sunday mornings

9:30 a.m.

Life Together Hall

Led by Pastor Briana Merkle

# ROCK MINISTRY

## Rock Ministry Announcements

### **EPIPHANY CELEBRATION**

**Sunday, January 5, 2020 • 9:30 a.m.**

The kids will celebrate Epiphany during the last half of class with a fun processional behind Mary and Joseph, as well as eat “king cake” in the Gym.

### **COMMUNION RETREAT for third and fourth grades**

**Sunday, January 12, 2020 • 12 noon to 2:00 p.m.**

Our time together will include lunch, activities (like bread making), and time exploring why we share in this sacred meal every week. This time of retreat is both fun and informative for kids in their faith! Please RSVP to Pastor Bri by January 5, 2020.

### **RSVP for the LUTHERWOOD 1–6 GRADE OVERNIGHT RETREAT**

**Friday, March 20 to Saturday, March 21, 2020**

Spend a night growing deeper in your faith through outdoor ministry. This is the perfect opportunity for kids to try out overnight camp without going for a whole week. Registration opens soon so get your RSVPs to Pastor Bri by January 31, 2020, then we'll register as a group. Cost is \$63/youth, scholarships are available as needed.

### **SAVE the DATES for VACATION BIBLE SCHOOL 2020**

**Monday, July 6 to Friday, July 10, 2020**



# HOLY COMMUNION RETREAT

Sunday, Jan. 12th • 12pm - 2pm



For 3rd and 4th grade children and parents

This retreat is part of a series of Rock Ministry retreats (from childhood to young adulthood) designed to teach and form our children in significant aspects of life in Christ.

Lunch will be served in the Life Together Hall, followed by Bible lessons and activities to help our children understand why we receive Communion each week. At least one parent or guardian is asked to attend with each child(ren).

RSVP to Pastor Bri by Jan. 5th  
[bmerkle@mtviewlutheran.org](mailto:bmerkle@mtviewlutheran.org)



# ROCK MINISTRY

## Middle Rock (5-7 Grades) Events

### **REGISTER for the SYNOD YOUTH GATHERING**

**Friday, March 6 to Sunday, March 8, 2020**

For all fifth, sixth, and seventh graders. Last year we got snowed out, but we can get a good crew this year. This is a weekend of diving into God's Word, remembering the promises of baptism, worshiping, and having fun. Registration is open now! Please contact Pastor Bri for the registration link. Cost is \$120 until Jan. 10 / \$130 until Feb. 8. Scholarships are available as needed.

### **REGISTER for FLATHEAD LUTHERAN BIBLE CAMP**

**Sunday, August 2 to Friday, August 7, 2020**

This trip is for youth currently in fifth through eighth grades. Register prior to Wednesday, April 1, 2020 for the lowest rate.





To experience Christ's grace  
through meaningful relationships,  
shared adventures,  
and purposeful service.

*"FLBC has been a constant for me, an anchor, a bright light, home.  
FLBC helped me navigate my faith in my teens.  
FLBC helped me discern my call as a young adult.  
FLBC helped Bruce and I to raise our children,  
and FLBC continues to partner with me in my role as a youth minister.  
I am filled with gratitude for this place and these people."*

—Traci V.

**Register at:** <https://flbc.net/summer-camp-programs/>

Youth are welcome to invite friends to register and come with us that week.  
\*Email Pastor Bri when you register to get on the MVLC Flathead email list.

**Youth heading into 6th or 7th** grades will register for Pathfinder Camp  
– Traditional Onsite (be sure to list you are with Mountain View Lutheran Church). Cost is \$390 before April 1 / \$415 before May 1 / \$440 after May 1

**Youth heading into 8th or 9th** grades will register for Trailblazer Camp  
– Traditional Onsite (be sure to list you are with Mountain View Lutheran Church). Cost is \$405 before April 1/ \$430 before May 1/ \$455 after May 1

Scholarships are available to help with cost as needed. Contact Pastor Bri for more info.



# ROCK MINISTRY

## High School (8-12 Grades) Events

### **RSVP for the HIGH SCHOOL SUMMER TRIP CHAMP CAMP with LUTHERHAVEN MINISTRIES Sunday, June 27 to Thursday, July 2, 2020**

The youth will spend the week partnered with a youth with disabilities—helping to make sure everyone has a chance to go to camp and experience it fully. We've done this trip before and it was a favorite of the youth. RSVP to Pastor Bri by December 8/ ASAP with a \$50 deposit. Friends are welcome too. The rest of registration will be due in the Spring. Cost is approximately \$330/youth (scholarships available).

### **RSVP: May Holden Youth Weekend, May 22-24**

This trip is for all 8-12 graders. Youth will leave early Friday morning (missing that day of school) and return Sunday evening. It is an experience not to miss. Cost is \$205/person (scholarships available as needed). For more info, see the following flyer. Please RSVP by January 19.







# TRANSFORMATION

MAY YOUTH WEEKENDS  
HOLDEN VILLAGE  
2020

## MAY 15-17 & MAY 22-24

CHANGE IS CONSTANT AND TRANSFORMATION IS SACRED. HOW CAN WE EXPRESS OUR CHANGING HEARTS AND MINDS TO SPEAK OUT AS CHANGE MAKERS IN GOD'S WORLD?



**Rev. Dr. Megan Rohrer**

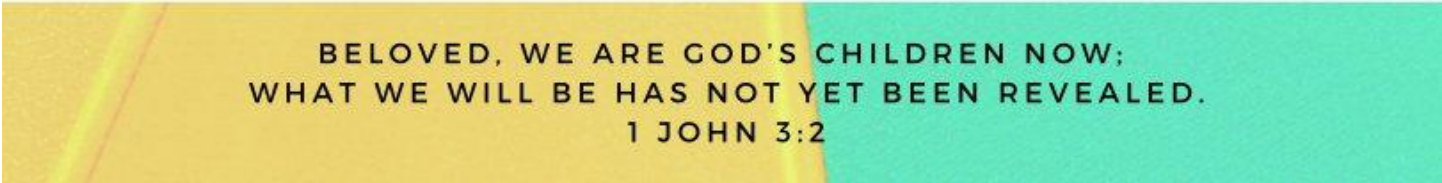
(they/their/them) is an award winning musician and historian and the first openly transgender pastor ordained in the Lutheran Church, currently called to serve at Grace Lutheran in San Francisco. Megan received an honorable mention as an Unsung Hero of Compassion by Wisdom in Action, with His Holiness the Dalai Lama and was recently featured both at Martin Luther's house in Wittenberg, Germany for the 500th Celebration of the Reformation and in Cosmopolitan.



**Andy Potsko**

(he/him/his) is a singer, songwriter, and storyteller based in Columbus, Ohio. His travels have led him throughout the U.S. and around the world to places like India and Turkey, Venezuela and Nigeria, Denmark and Nepal. As a recent graduate of Trinity Lutheran Seminary, he and his family are awaiting their first call.

[HTTPS://WWW.LUTHERANSNW.ORG/MAY-YOUTH-WEEKENDS-AT-HOLDEN](https://www.lutheransnw.org/may-youth-weekends-at-holden)



BELOVED, WE ARE GOD'S CHILDREN NOW;  
WHAT WE WILL BE HAS NOT YET BEEN REVEALED.  
1 JOHN 3:2

# PRAYERS of the CHURCH

Lord, in your mercy, hear our prayer.

We pray for those who celebrate  
the births of new children.

- ) Brendan and Sarah Massey at the birth of son Donovan Raymond Massey,  
grandson of Mark and Diane Tyler.
- ) Tyson and Danika Rickerson at the birth of Freya Katarina Rickerson,  
granddaughter of Dave and Kim Lawson.
- ) Morgan and Jessica Hushagen at the birth of Rosalind May Hushagen,  
granddaughter of Jim and Debbie Hushagen.

We pray for those who mourn  
the deaths of loved ones.

- ) David and Joyce Maxwell at the death of their son John Maxwell.
- ) Gary and Flora Larson at the death of Flora's nephew Shawn Vanderford.
- ) Jay Holland at the death of his sister-in-law Joyce Goad.
- ) Erik and Diksha Knierim at the death of Erik's brother-in-law John.

# PRAYERS of the CHURCH

We pray for members of our congregation  
in need of healing.

- ) John Bachner.
- ) Darrel Hagen.
- ) Stewart Luckman.
- ) Doug Mandt.
- ) Darel Roa.
- ) Ken Sturgeon.
- ) Pete Thibadeau.

We pray for our family and friends  
in need of healing.

- ) Brandon, friend of Evan Reece.
- ) Sue Baker, mother of Diane Tyler.
- ) Delores Chapel, sister of Lois Stark.
- ) Marylyn Dicinoski, cousin of Phil Edlund.
- ) Cathy Ghiglione, friend of Kathy Harris.
- ) Stacey Hailey, daughter of Ed and Lois Stark.
- ) Dianne Kimble, sister of Darlene Thompson.
- ) Chase Massey, great-nephew of Helen Harwood.
- ) Wendell Nascimento, friend of Mervina Sturgeon and Pili Wolfe.
- ) Hanna Safley, friend of the MVLC high school youth.
- ) Marshall Smith, brother-in-law of Ann Yost.
- ) Jim Stark, son of Ed and Lois Stark.
- ) Ron Thompson, son of Darlene Thompson.

Amen .



# MEET the NEW STAFF PERSON

Director of Music Ministries  
Susan Bloomfield

Hi, everyone!

My name is Susan Bloomfield and I'm your new Director of Music Ministries! I'm a native Washingtonian, born in Tacoma and grew up in Puyallup and Shelton. I was raised as a Baptist and have played in church since I was a child - following in the footsteps of my mother, aunt, and grandmother. In high school I got my first paying 'gig' as a church musician, at St. Germain's Episcopal Church in Hoodspport. I fell in love with the liturgy and music of the Episcopal church and the rest is history! I have served as a church musician for many congregations, primarily Lutheran and Episcopalian.

I attended Pacific Lutheran University for my Bachelor's degree - where I majored in Organ Performance with an emphasis on Choral Conducting. I was lucky enough to study with amazing teachers such as David Dahl, Jim Holloway, and Richard Sparks. A few years later, I went back to school and received a Master's Degree in Music History from Western Washington University. My thesis was about Elizabeth Stirling - a female organist and composer in Victorian England. Between my years at graduate school, I also completed a program for Cross-cultural Music and Healing.

In my spare time, I enjoy reading, crafting, doing home projects, going on road trips, camping, and hiking. I have one son, Robert (16), and my partner, Will, has one daughter, Mary (9).

I am so grateful to be here with you and I look forward to many years of ministry together!

*Susan*



Contact **Susan**

**Email** • [sbloomfield@mtviewlutheran.org](mailto:sbloomfield@mtviewlutheran.org)

**Phone** • 253-863-5171, ext. 106

**Susan's** Office Hours

**Tuesday** • 10:00 a.m. to 3:00 p.m.

**Wednesday** • 3:00 p.m. to 8:00 p.m.

**Thursday** • 10:30 a.m. to 3:30 p.m.

**Friday** • 10:00 a.m. to 1:00 p.m.

# HOMELESS POINT-in-TIME COUNT

## Volunteers Needed

Every night, hundreds of people in Pierce County sleep on the streets, in cars, or in shelters.

This January, we are looking for volunteers to join us for the annual Point-In-Time (PIT) Count! The count is a one-day event where outreach workers and volunteers survey people experiencing homelessness.

Communities use the information collected during the PIT count to better understand why people become homeless, plan thoughtful programs that respond to the needs of people experiencing homelessness, review trends to better understand homelessness over time, and so much more!

Volunteers will be stationed at meal sites, day shelters, events such as Project Homeless Connect, and DSHS offices throughout Pierce County. and will complete surveys of people experiencing homelessness.

### PIT Count Volunteers:

- ) Must be at least 18 years of age.
- ) Must attend a Point-in-Time Count Training.
- ) Search for unsheltered homeless within designated locations.
- ) Survey individuals experiencing homelessness using the mobile app 'Counting Us.'

Visit the following link to register to volunteer for the Point in Time Count and select a training: [www.piercecountywa.gov/5985/Point-in-Time-Count-Registration](http://www.piercecountywa.gov/5985/Point-in-Time-Count-Registration)

# Volunteers Needed

## Homeless Point-In-Time Count

### January 24, 2020



# HOMELESS POINT-in-TIME COUNT

## Donations Needed

Donations are given to anyone who is experiencing homelessness on the night of the PIT, and provides a starting point for the conversation to complete the survey. We are accepting donations through January 23.

### Items Needed:

- ) Socks.
- ) Hats.
- ) Gloves.
- ) Hygiene kits: shampoo, conditioner, soaps, razors, deodorant, toothbrushes, toothpaste, feminine products.
- ) Warm blankets/space blankets.
- ) First aid kits.
- ) Hand and foot warmers.
- ) Packaged foods: granola bars, bottled water, etc.

The Mountain View Community Center is one of the drop-off locations for donations.

Mountain View Community Center  
3607 122nd Ave. E. Suite A. Edgewood, WA  
M-W: 9AM - 4PM Thursdays: 9AM - 6:30PM

Visit the following link for more drop-off locations and information:  
[www.piercecountywa.gov/4719/Point-In-Time-Count-PIT](http://www.piercecountywa.gov/4719/Point-In-Time-Count-PIT)

"The Point-In-Time Count provides the homeless assistance community with the data needed to understand the number and characteristics of persons who are homeless at one point in time."

—U.S. Department of Housing & Urban Development

# LIVING HOPE : Past , Present , and Future

## Case Statement

For more than 115 years, Mountain View Lutheran Church has served as a beacon of hope to the surrounding communities, and, yes, to the larger world. Over that same period, we the people of God, from the past to the present, looking toward a future, have embraced multiple challenges. And now, it is time, yet again, to welcome a new and provocative invitation. As a congregation living into hope—past, present, and future—we believe it is essential to pay down debt, providing ministry opportunities toward the future; to build a long-awaited columbarium; to maintain our existing buildings; and to update and modify the existing Sanctuary space. Together, we accept the challenge of a capital campaign of \$750,000 as a faithful response to the calling of God in each of our lives. Living into hope—past, present, and future—we celebrate together God's faithfulness and respond to the same with heartfelt gratitude.



# LIVING HOPE: Past, Present, and Future

## Cottage Meetings

Members of the congregation are encouraged to sign up for one of the “Living Hope: Past, Present, and Future” cottage meetings, the purpose of which is to engage the conversation regarding the priorities of the capital campaign with information and inspiration.

Sign up online at the MVLC website post for “Living Hope • Cottage Meetings.”

## Celebration

Save the date for the Living Hope dinner event in the MVLC Gym at 6:00 p.m. on Saturday, February 22, 2020.





# JANUARY 2020 • ExALT

## ***Eyes to See and Ears to Hear: Guided Meditations on Art, Scripture, and Other Spiritual Texts***

*facilitated by MVLC member Rev. Dr. Ronald Rosenau*

Did you know that you have all the qualifications you need to be a connoisseur of fine art? Did you ever have a conversation with a painting? What did it say to you? What did you say in reply? Did you know that the most artful images can be *treacherous*? Or that no two people can ever look at the same painting? Or that there is always more to great art than meets the eye? Is a painting a “thing” or is it an “event?” Where do paintings go when the lights in the museum have been turned off? Have you ever heard of a tradition within Christian spirituality in which distortion is used to pull you into an encounter with God? Is it possible for a painting to interpret the Bible in new and profound ways? Did you know that Martin Luther’s dread of rainbows drove him to a new way of looking at Christ and the good news of the gospel? If I told you that time travel was a key component not only of Christian spirituality, but also of great paintings, would you believe me?

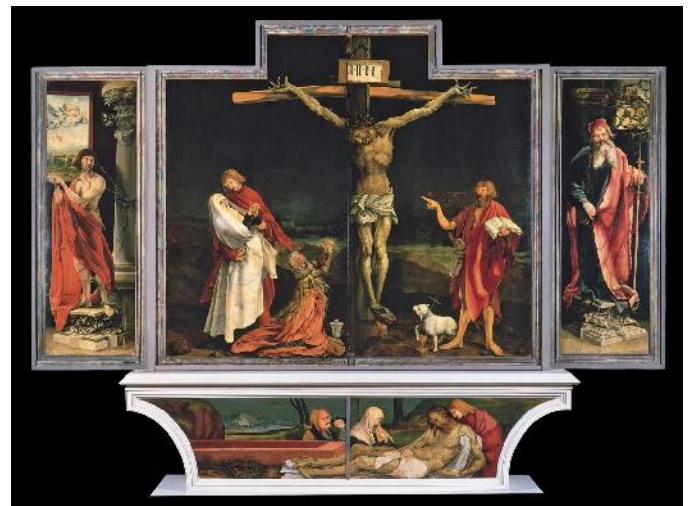
Each Wednesday evening in January, ExALT will focus on these questions and others. We will contemplate great works of art (Picasso, Rublev, Rembrandt, Delacroix, Rubens, Chagall, Grünewald, Bosch, Kandinsky, and others), great stories from the Bible (the Ten Commandments, the Flood, the Good Samaritan, the Last Judgment, the Crucifixion), and readings from great thinkers and theologians.

You don’t need to know a thing about art history or the Bible to appreciate the experience. You already have all the qualifications you need: Eyes to See and Ears to Hear.

Wednesday evenings  
dinner at 5:45 p.m. in the Life Together Hall  
class at 6:30 p.m. in the Education Building

### **January**

- 8 “You Lookin’ At Me?”
- 15 “Somewhere Under the Rainbow”
- 22 “Mad Men”
- 29 “Selfies at the Cross”



# ExALT

## for

# KIDS



ExALT lessons will focus on teaching ages first grade through seventh grade. The help of our 8-12 graders is always appreciated, but content will be geared toward younger youth. 2-year-olds through kindergartners are asked to participate in the Nursery/Child Care Area and its activities with Miss Susan and Miss Ashley during ExALT.

The focus for January and February 2020 will be “On Earth as In Heaven.” We’ll be studying the Lord’s Prayer line by line. As we do, we’ll learn about how God is at work transforming the world and how we can be a part of this mission.

*Wednesday evenings*  
*dinner at 5:45 p.m. in the Life Together Hall*  
*class at 6:30 p.m. in the Education Building*

### **January**

- 8 “Give us today our daily bread”
- 15 “Your will be done, on earth as in heaven”
- 22 Bingo at Mill Ridge Village
- 29 “Your kingdom come”

### **February**

- 5 “Hallowed be your name”
- 12 “For the kingdom, the power, and the glory are yours...”
- 19 Bingo at Mill Ridge Village
- 26 Ash Wednesday Worship

ExALT classes will resume after Lent on Wednesday, April 22, 2019.

Poinsettias given in memory or in honor of loved ones to beautify the Sanctuary during Advent and Christmas.

***Given by...  
in memory and/or honor of...***

Joe and Rosemarie Anderson  
Joe's brother Clif

Nan Bolin  
all her loved ones

Carolee and Chris Berntsen  
Dave Berntsen

Al and Lois Carlson  
his brother Dale Carlson

Pat Clement  
Sister Helen Cecelia, SND, and Ben, Helen, and Michael McFeeley

Kevin and Sonja Dahl  
Everett and Dorothy Dahl

Mary Beth Dahl

Ken and Barb Edmonds  
their daughter Kari's 50th birthday

Mary Farden  
her husband Roger Farden

Jacque Fauber  
Cass Fauber and Tracy Martinson

Mary Finney  
her grandson Nicholas Finney

Russ and Joan Hamburg  
grandchildren Celia, Vivian, and Timothy

Bill and Debbie Hansen  
their grandchildren

Rick and Karen Hansen  
their parents, Don and Gladys Hansen and Walt and Freda Hendrickson



Kathy Harris  
her parents, Albert and Helen Jansen

Mary Jasmund  
Robert F. Jasmund and Joseph J. Ropel

Roy and Barbara Keehnel  
Emil Valenta

Tim and Karen Keopple

Bob and Joan Linden  
the gift of family and friends

Lorraine Larson  
Art Larson

David and Joyce Maxwell  
John Maxwell

Connie McCrossin  
her grandparents

Don Mott  
Barrie Mott

Glenn and Carol Petersen  
Hans Petersen and Clairbell Petersen

Steve and Linda Petersen  
their parents

Rod and Chris Ray

George Rowe  
his mother and father

Ken and Sandi Swanson  
Dorothy Somers and Tom Swanson

Betsy Tunstall  
Bruce Tunstall and their parents

Esther Wiesner

Julie and Mark Williams  
their parents, children, and grandchildren

# HEALTH MINISTRY

## Thank You

Dear Members of Mountain View Lutheran Church,

After prayerful consideration, I have made the decision to retire from my role as Parish Nurse. This is difficult for me as I treasure my brothers and sisters in Christ here at Mountain View. I cannot describe the joy I have experienced as a nurse to many of you. What an immense pleasure, as a member of the Body of Christ, it has been to walk alongside you. I am honored you put your confidence in me and allowed me to assist with health concerns, blood pressure screenings, navigating the health care system, pre- and post-operative care, and hospitalizations.

My Registered Nurse license comes up for renewal in 2020. I will not renew and will retire after 46 years as a Registered Nurse. My role as Parish Nurse will end 12/31/2019. The professional role within the congregation will change, but as your sister in Christ I will be available to any member needing support, transportation, conversation, and companionship. We are all in God's hands in the world and I will continue to extend my hands to you.

I extend my sincere appreciation to Mountain View members for allowing me to be your Parish Nurse. It has been a role I will treasure always. Thanks be to God for each of you as a blessing in my life!

Sincerely,

*Terry Freed* RN  
Parish Nurse

# MOUNTAIN VIEW COMMUNITY CENTER

## Thank You

Dear Members of MVLC,

On behalf of our board and staff I want to offer our sincere gratitude for all the ways in which you made the holidays brighter for the hundreds of families served by MVCC and helped invigorate our feeding programs in 2020 for our neighbors in need. Thanks to your generosity and the community's support we:

- J Held a very successful 11th Annual Santa Breakfast where 100+ volunteers distributed 1,248 stocking stuffers, served 490 breakfasts, and gave 549 children a coat to keep them warm this winter.
- J Sponsored 20 families identified by our local schools as well as the whole Fife/Milton/Edgewood ECEAP Program (40 preschoolers) with toys, clothing, and household items.
- J Raised over \$28,000 for 28,000 meals in 2020 through our matching #GivingTuesday Campaign.

We continue to be blessed to serve alongside you as we develop *successful kids, hopeful families, and active* seniors in the spirit of Christ's love in 2020!

Warm regards,

*Jesie Holden*  
Executive Director



# UPCOMING EVENTS

## Communion Bread Baking

We will be baking communion bread on Monday, January 13, 2020 at 9:00 a.m. in the Life Together Hall kitchen. If you are interested in helping, then please contact Diane Nelson at [dlnelson25@comcast.net](mailto:dlnelson25@comcast.net) or 253-861-7147 for the recipe and more information.

## Women's Bible Study

The Thursday Morning Women's Bible Study meets at 9:30 a.m. on Thursday, January 16, 2020 in the MVLC Library. A new study starts in the new year, with a pastor-led look at Second Corinthians.

## Men's Bible Study

The Saturday Morning Men's Bible Study meets at 7:00 p.m. each Saturday in the Chapel basement. Breakfast is from 7:00 to 7:30 a.m. followed by member-led study from 7:30 to 9:00 a.m. They are currently studying Second Corinthians.



# FEBRUARY ADULT EDUCATION

## Hymnology: The Who, Why, When, Where, and How of What We Sing

Essential, I think, to our worship are the words and music of our liturgy and hymnody. For ages upon ages, we Christians have been singing songs of praise and prayer, hope and thanksgiving, longing and lament. We have grown up with worship books, perhaps with Mom or Dad holding the book so that we could follow along. That is likely how we began to learn musical notation.

Where do these hymns come from? Who writes them? Where did/do the authors live? When? Why do we sing them? How do the hymn texts speak to us? Who composes the music? How do the hymns get included in our worship books?

On the first three Sundays of February, during adult Sunday school, Glenn Petersen ('Pastor Glenn'), with the capable musicianship of Susan Bloomfield, will share a sample of hymn texts and tunes. There are so many to choose from. Come, as we explore the poetry, theology and music of what we sing.

Week 1 • February 2

Week 2 • February 9

Week 3 • February 16

Sunday mornings in February

9:30 a.m.

Life Together Hall

Led by Pastor Glenn Petersen

## DECEMBER 2019

### *First Sunday of Christmas*

Isaiah 63:7-9 • Psalm 148 • Hebrews 2:10-18 • Matthew 2:13-23

#### 29 SUNDAY

8:15 a.m.    Worship  
10:45 a.m.    Worship

#### 30 MONDAY

1:00 p.m.    Mary Circle

#### 31 TUESDAY

10:00 a.m.    Staff Meeting

#### 1 WEDNESDAY • NEW YEAR'S DAY

**New Year's Day**  
**Church Office Closed**

**Edgewood Nourish Food Bank Closed**  
**Mountain View Community Center Closed**

#### 2 THURSDAY

#### 3 FRIDAY

#### 4 SATURDAY

7:00 a.m.    Men's Bible Study

# JANUARY 2020

## *Second Sunday of Christmas*

Jeremiah 31:7-14 • Psalm 147:12-20 • Ephesians 1:3-14 • John 1:1-18

### 5 SUNDAY

8:15 a.m. Worship  
9:30 a.m. Rock Ministry and Adult Education  
10:45 a.m. Worship

### 6 MONDAY

### 7 TUESDAY

10:00 a.m. Staff Meeting  
1:00 p.m. Book Club  
6:00 p.m. Peace and Justice Ministry Group

### 8 WEDNESDAY

9:30 a.m. MVLC Quilters

#### **ExALT**

5:00 p.m. Children's Choir Rehearsal  
5:45 p.m. Dinner  
6:30 p.m. Classes  
7:30 p.m. Sanctuary Choir Rehearsal

### 9 THURSDAY

8:30 a.m. Honey Doers  
10:00 a.m. Prayer Shawls  
7:00 p.m. Deacons

### 10 FRIDAY

5:30 p.m. Rock Ministry K–5 Gathering

### 11 SATURDAY

7:00 a.m. Men's Bible Study

# JANUARY 2020

## *Baptism of Our Lord*

Isaiah 42:19 • Psalm 29 • Acts 10:34-43 • Matthew 3:13-17

### 12 SUNDAY

8:15 a.m.	Worship	
9:30 a.m.	Rock Ministry and Adult Education	Fair trade coffee, tea, and chocolate
10:45 a.m.	Worship	
12 noon	Holy Communion Retreat	

### 13 MONDAY

9:00 a.m. Communion Bread Baking

### 14 TUESDAY

10:00 a.m. Staff Meeting  
1:00 p.m. Book Club  
6:00 p.m. Peace and Justice  
6:30 p.m. Church Council

### 15 WEDNESDAY

9:30 a.m. MVLC Quilters

#### **ExALT**

5:00 p.m. Children's Choir Rehearsal  
5:45 p.m. Dinner  
6:30 p.m. Classes  
7:30 p.m. Sanctuary Choir Rehearsal

### 16 THURSDAY

8:30 a.m. Honey Doers  
9:30 a.m. Women's Bible Study

### 17 FRIDAY

### 18 SATURDAY

7:00 a.m. Men's Bible Study



# JANUARY 2020

## *Second Sunday after Epiphany*

Isaiah 49:1-7 • Psalm 40:1-10 • 1 Corinthians 1:1-9 • John 1:29-42

### 19 SUNDAY

8:15 a.m.      Worship  
9:30 a.m.      Rock Ministry and Adult Education  
10:45 a.m.      Worship

### 20 MONDAY

### 21 TUESDAY

10:00 a.m.      Staff Meeting  
12:30 p.m.      Rebecca Circle

### 22 WEDNESDAY

9:30 a.m.      MVLC Quilters

#### **ExALT**

5:00 p.m.      Children's Choir Rehearsal  
5:45 p.m.      Dinner  
6:30 p.m.      Classes  
7:30 p.m.      Sanctuary Choir Rehearsal

### 23 THURSDAY

8:30 a.m.      Honey Doers

### 24 FRIDAY

### 25 SATURDAY

7:00 a.m.      Men's Bible Study

# JANUARY 2020

## *Third Sunday after Epiphany*

Isaiah 9:1-4 • Psalm 27:1, 4-9 • 1 Corinthians 1:10-18 • Matthew 4:12-23

### 26 SUNDAY

8:15 a.m. Worship  
9:30 a.m. Rock Ministry and Adult Education  
10:45 a.m. Worship

### 27 MONDAY

1:00 p.m. Mary Circle

### 28 TUESDAY

10:00 a.m. Staff Meeting  
6:30 p.m. Church Council

### 29 WEDNESDAY

9:30 a.m. MVLC Quilters

#### **ExALT**

5:00 p.m. Children's Choir Rehearsal  
5:45 p.m. Dinner  
6:30 p.m. Classes  
7:30 p.m. Sanctuary Choir Rehearsal

### 30 THURSDAY

8:30 a.m. Honey Doers

### 31 FRIDAY

### 1 SATURDAY

7:00 a.m. Men's Bible Study

# IMAGES/NOTES

Front cover: Infographic on Homelessness by Pierce County, Washington.

Page 5: Flier by Pastor Briana Merkle.

Page 7: FLBC logo by Flathead Lutheran Bible Camp.

Page 8: Photograph from 2017 Holden Youth Weekend by Anna Hagen.

Page 9: Flier by Holden Village.

Page 13: Photograph by Susan Bloomfield.

Pages 16 and 17: Photograph of the new "Living Hope" banner, created and constructed by Marie Philipsen.

Page 18: "Isenheim Altarpiece," first view, oil on wood, 1512–1516, by Matthias Grünewald. Public domain.

Page 19: Flier by Pastor Briana Merkle.

Page 23: Photograph of the MVCC Santa Breakfast by Troy Kehm-Goins.

Back cover: Photograph of Christmas Eve 2019 by Troy Kehm-Goins.

*Many thanks to those who help make this newsletter a reality by submitting photos, fliers, articles, and information—staff, ministry group chairpersons, ministry partners, and members of the congregation.*

*Would you like to submit something for consideration? It needs to be emailed to MVLC Communications Director Troy Kehm-Goins by the 15th of the month prior to publication. And preferably in an editable electronic format!*

*Items for the February 2020 newsletter need to be sent to MVLC Communication Director Troy Kehm-Goins at [tkehm-goins@mtviewlutheran.org](mailto:tkehm-goins@mtviewlutheran.org) by 3:00 p.m. on Wednesday, January 15.*

## CONTACT

Mountain View Lutheran Church

253-863-5171

[office@mtviewlutheran.org](mailto:office@mtviewlutheran.org)

Senior Pastor John L. Vaswig • [jlvaswig@mtviewlutheran.org](mailto:jlvaswig@mtviewlutheran.org)

Associate Pastor Briana Merkle • [bmerkle@mtviewlutheran.org](mailto:bmerkle@mtviewlutheran.org)

Church Administrator Phil Edlund • [pedlund@mtviewlutheran.org](mailto:pedlund@mtviewlutheran.org)

Director of Music Ministries Susan Bloomfield • [sbloomfield@mtviewlutheran.org](mailto:sbloomfield@mtviewlutheran.org)

Parish Worker Marlene Wright • [mwright@mtviewlutheran.org](mailto:mwright@mtviewlutheran.org)

Communications Director Troy Kehm-Goins • [tkehm-goins@mtviewlutheran.org](mailto:tkehm-goins@mtviewlutheran.org)



Mountain View Lutheran Church  
3505 - 122nd Ave E • Edgewood WA 98372  
253-863-5171 • [www.mtviewlutheran.org](http://www.mtviewlutheran.org)

WEBSITE • [www.mtviewlutheran.org](http://www.mtviewlutheran.org)

FACEBOOK • [www.facebook.com/mtviewlutheran](https://www.facebook.com/mtviewlutheran)

FLICKR • [www.flickr.com/mtviewlutheran](https://www.flickr.com/mtviewlutheran)